

AP MORGAN



Bell Court, Birmingham
Asking Price £80,000

Features:

- One double & one single bedroom
- Spacious lounge/diner
- Fitted kitchen
- Bathroom
- Allocated parking bay
- Close to amenities

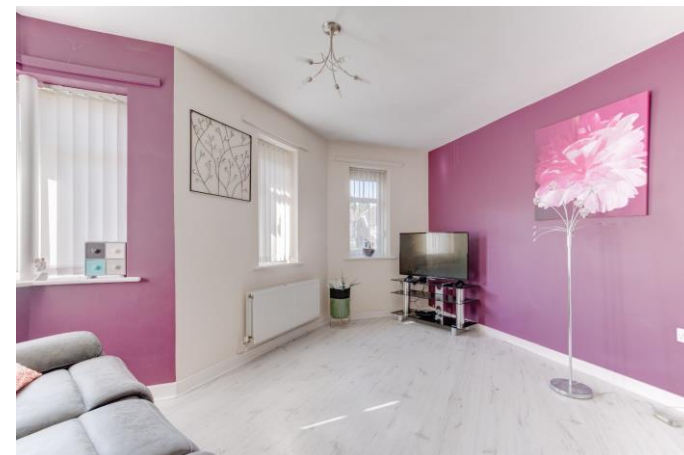
Description:

This well presented, two-bedroom, first floor flat presents a spacious lounge/diner, fitted kitchen, one double & one single bedrooms, a modern bathroom, plenty of storage and an allocated parking bay.

Approaching the property there is an entrance from the road to the communal carpark with bays allocated for flats.

Entering the property to the hall, there is immediate access to the stairs leading to the first-floor landing giving access to the spacious lounge/diner which presents space for multiple suites, a front facing bay window giving panoramic views of the front aspect and a dining area supporting a dining table and chairs. There is also access to the open plan fitted kitchen presenting plenty of counterspace with an integral electric oven, gas hob and sink with additional space/plumbing for freestanding appliances. Bedroom One is a large double looking to the front aspect with ample room for freestanding furniture, Bedroom Two is a comfortable double looking to the rear. The modern bathroom presents a washbasin, WC and bath/shower. The flat is completed by two storage cupboards.

Situated in Birmingham, this property is approximately 1 mile away from Northfield shopping centre and is a short drive from amenities such as schooling, restaurants, shops and supermarkets. There are public transport links and easy access to major roadworks, namely the M42 and M5 motorways.



Details:

Hall

Lounge/Diner 9'8" x 24'2" (2.95m x 7.37m) Both Max

Kitchen 8'5" x 8' (2.57m x 2.44m)

Bedroom One 12'8" x 10'7" (3.86m x 3.23m) Both Max

Bedroom Two 12'7" x 5'3" (3.84m x 1.6m) Both Max

Bathroom 6'3" x 6'10" (1.9m x 2.08m)



EPC Rating: B

Council Tax Band: B (tbc by solicitors).

Tenure: Leasehold (tbc by solicitors).

For more information or to arrange a viewing, please call us on 0121 827 6827.

How can we help you?

Need a mortgage?

We recommend Wisser Mortgage Advice. They will search the market for you to ensure you get the right lender and mortgage deal. They typically achieve mortgage offers much more quickly than if you were dealing with lenders directly. The initial appointment is free and without obligation. Call us on 0121 827 6827, or visit their website for more information: www.wissermortgageadvice.co.uk

Property to sell?

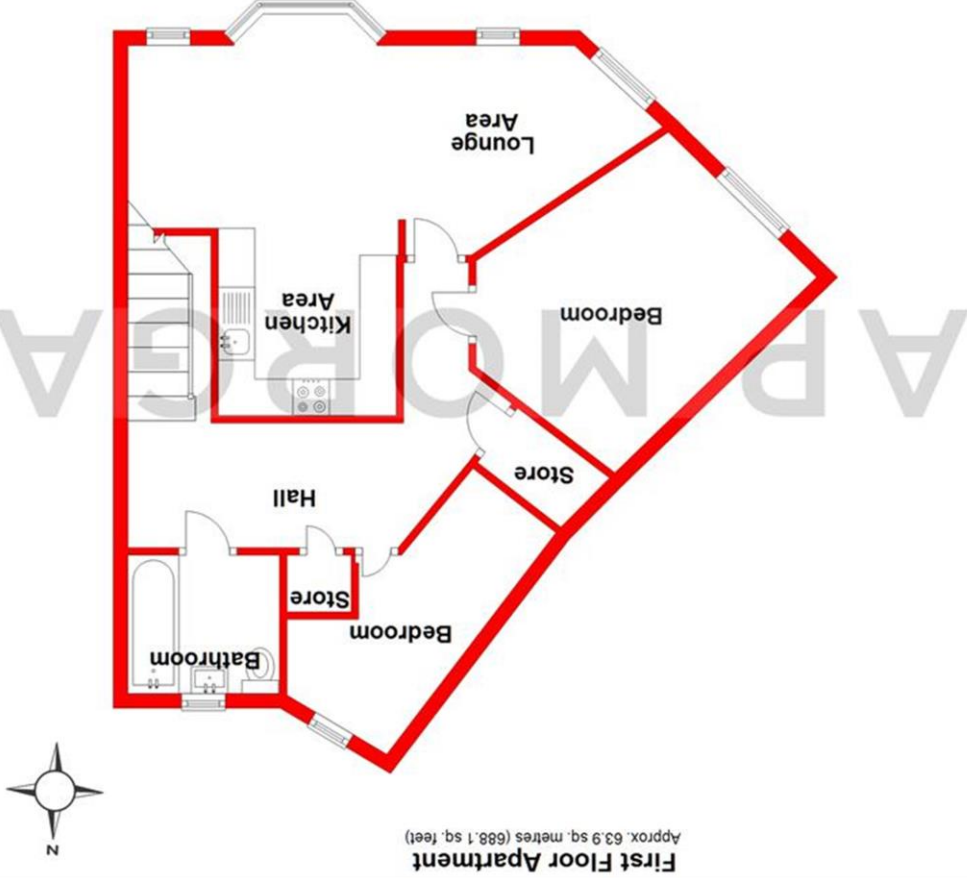
If you need to sell a property in order to buy, you ideally need to be on the market at least (and preferably Sold STC) before viewing, otherwise you may lose out to other buyers when the right property comes along. In these circumstances we can get your property 'live' quickly. Just book a free valuation and we will visit your property and discuss your needs.

Need a solicitor?

A good solicitor can save you literally weeks of time in the buying/selling process, reducing the stress levels of all involved. We will instruct a reputable firm that is competitive on cost and very reliable. Just ask for a quote.

Identity Checks

Estate Agents are required by law to conduct anti-money laundering checks on all those buying a property. We have partnered with a third party supplier to undertake these who will contact you once you have had an offer accepted on a property you wish to buy. The cost of these checks is £39 + VAT per buyer and this is a non-refundable fee. These charges cover the cost of obtaining relevant data, any manual checks and monitoring which might be required. This fee will need to be paid and the checks completed in advance of the issuing of a memorandum of sale on the property you would like to buy.



No statement in these details is to be relied upon as representation of fact, and purchasers should satisfy themselves by inspection or otherwise as to the accuracy of the statements contained within. These details do not constitute any part of any offer or contract. AP Morgan and their employees and agents do not have any warranty or representation whatsoever in respect of this property. These details and all statements herein are provided without any responsibility on the part of AP Morgan or the vendors. Equipment: AP Morgan has not tested the equipment or central heating system mentioned in these particulars and the purchasers are advised to satisfy themselves as to the working order and condition. Measurements: Great care is taken when measuring, but measurements should not be relied upon for ordering carpets, equipment, etc. The Laws of Copyright protect this material. AP Morgan is the Owner of the copyright. This property sheet forms part of our database and is protected by the database right and copyright laws. No unauthorised copying or distribution without permission.